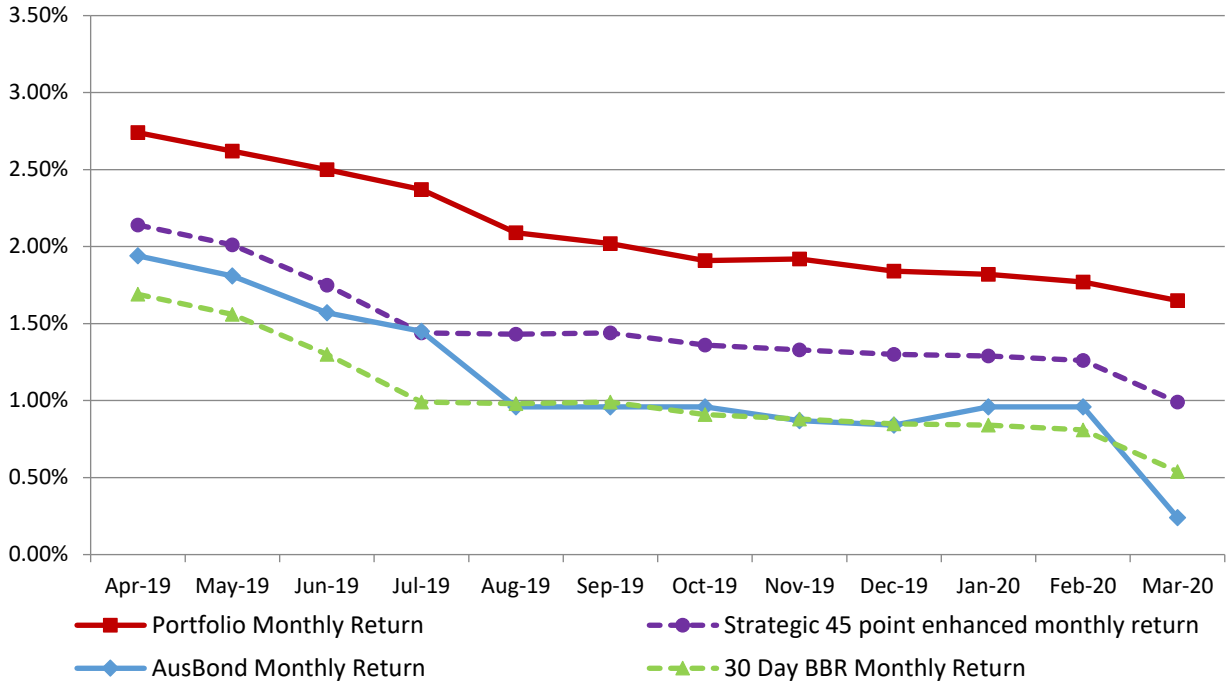


Attachment B

<p>Investment Performance as at 31 March 2020</p>
--

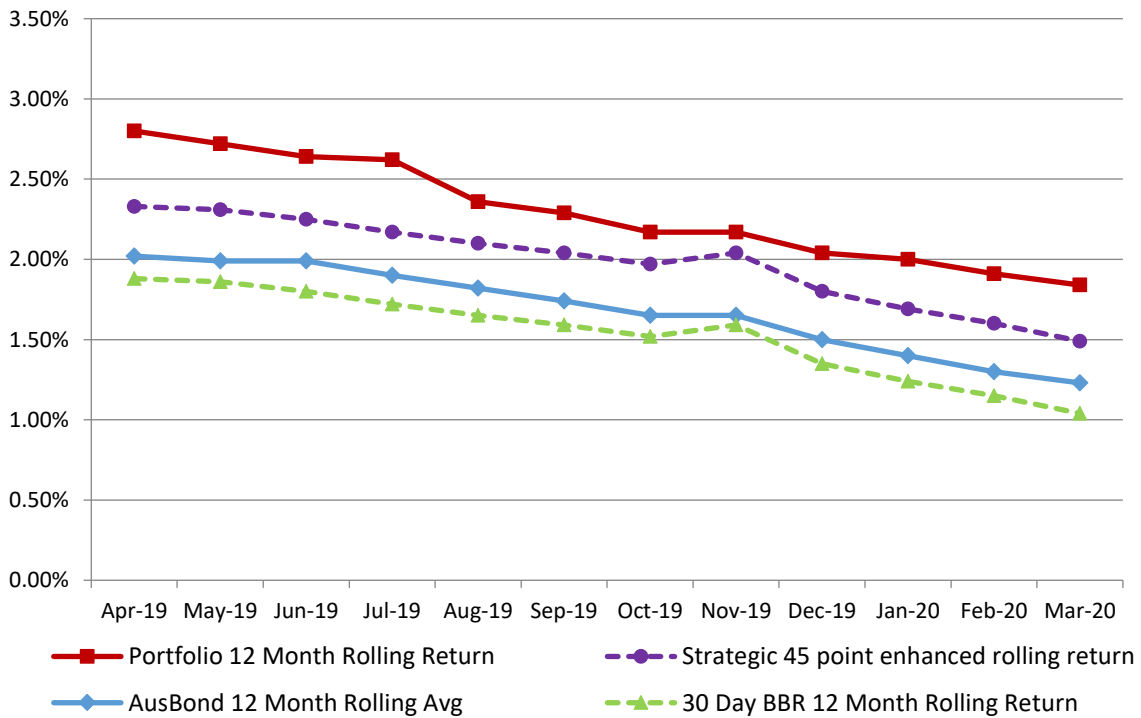
Monthly Results

Actual Portfolio vs Strategic Enhanced Benchmark vs AusBond Benchmark vs 30 Day BBR Benchmark
March 2020

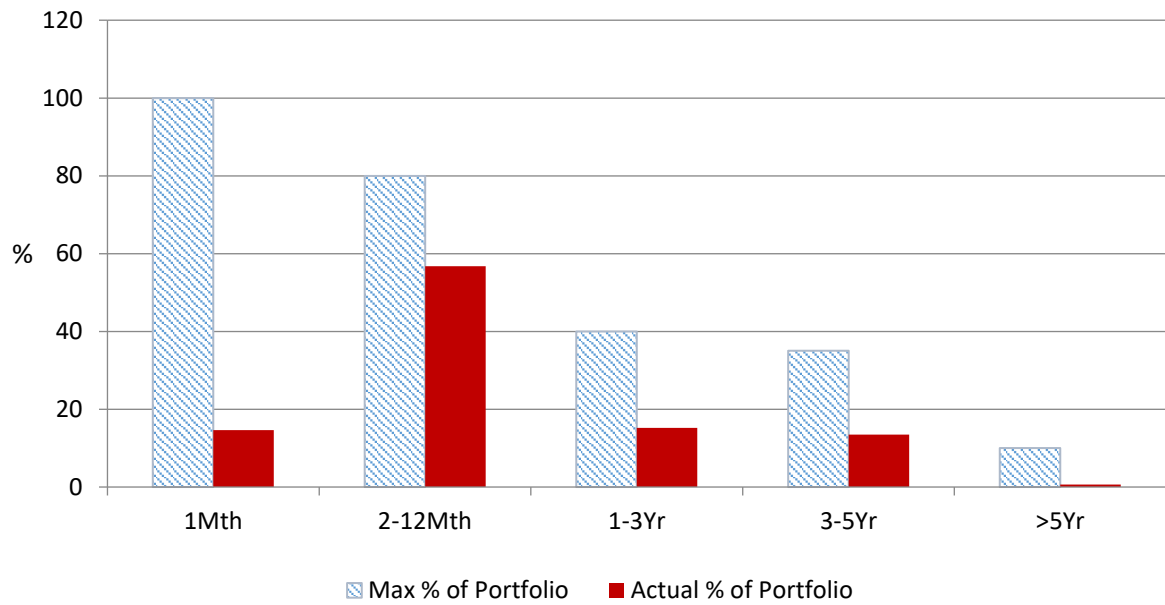


12 Month Rolling Averages

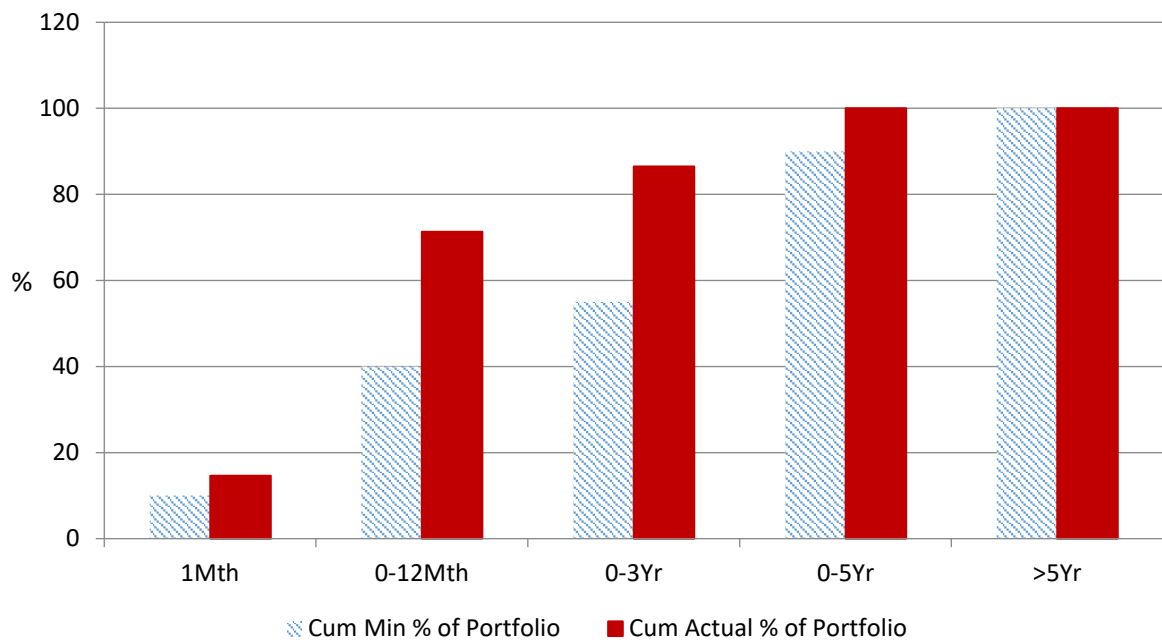
Actual Portfolio vs Strategic Enhanced Benchmark vs AusBond Benchmark vs 30 Day BBR Benchmark
March 2020



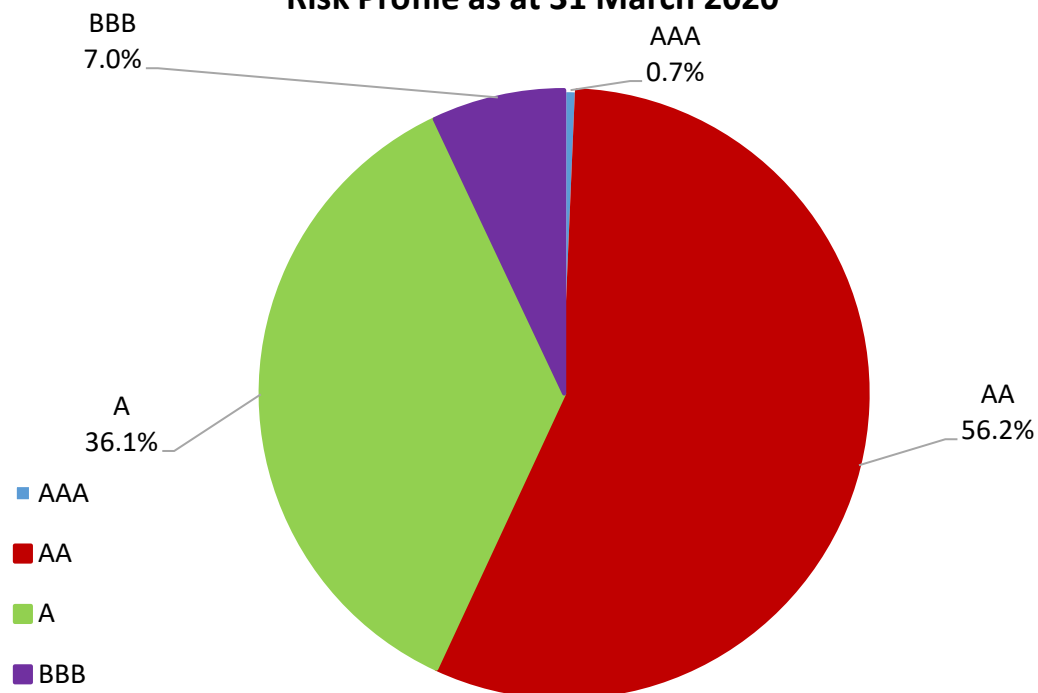
% Liquidity - Maximum Allowances as at 31 March 2020



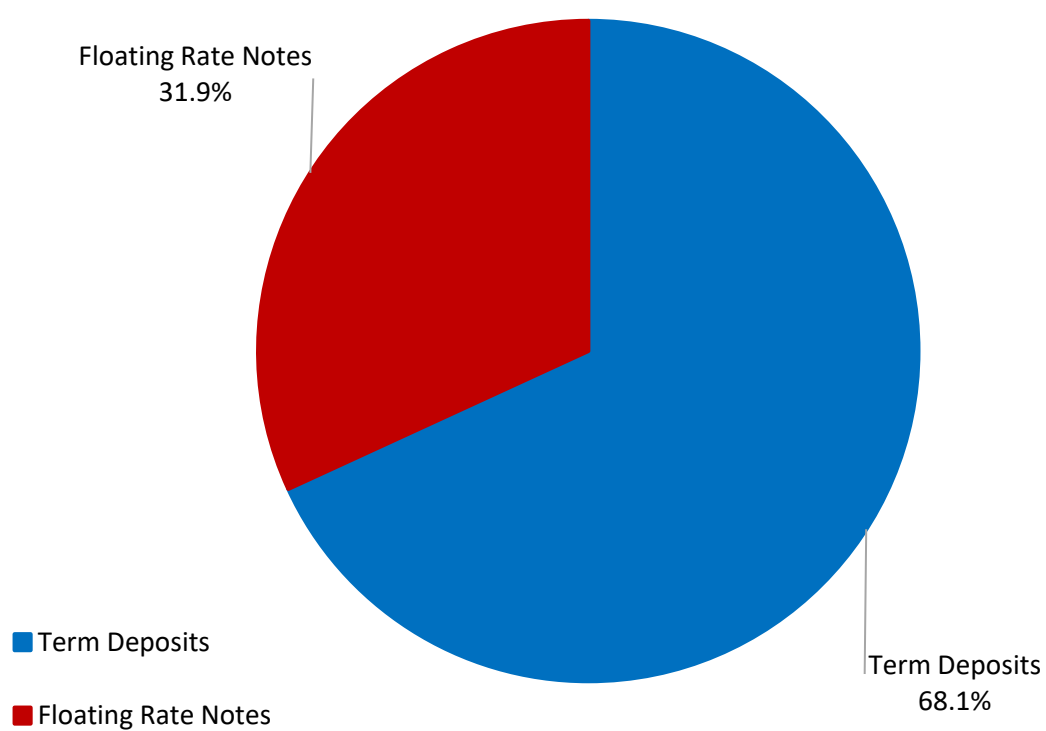
% Liquidity - Minimum Allocations as at 31 March 2020



Risk Profile as at 31 March 2020



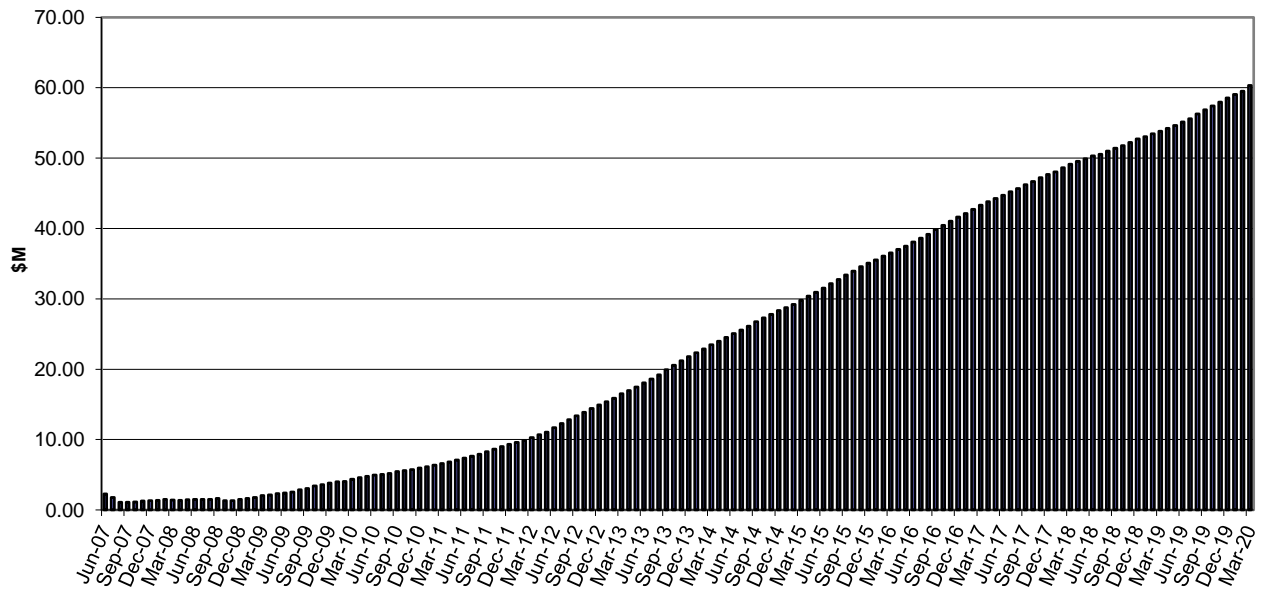
Investment Product Profile as at 31 March 2020



**INVESTMENT AND CASH DISTRIBUTION BY FINANCIAL
INSTITUTION
AS AT 31 March 2020**

Institution Category	Financial Institution	Amount \$M	Financial Inst. %	Institution Cat. %
Australian Big 4 Bank (and related institutions)	ANZ Bank	48.0	7.1	
	Commonwealth Bank-related:	38.1	5.6	
	National Australia Bank	75.7	11.1	
	Westpac Banking Corporation	225.7	33.2	
Big 4 Total		387.5		57.0
Other Australian ADIs and Australian subsidiaries of foreign institutions	AMP Bank	5.0	0.7	
	Bank Australia Limited	5.0	0.7	
	Bank of China	4.5	0.7	
	Bank of Queensland	29.0	4.3	
	Bendigo & Adelaide Bank	45.0	6.6	
	Credit Union Australia Ltd	49.3	7.2	
	Heritage Bank	3.5	0.5	
	IMB	15.0	2.2	
	Macquarie Bank Ltd	50.0	7.4	
	ME Bank	42.8	6.3	
	Newcastle Permanent Building Society	12.5	1.8	
	Suncorp Bank	31.0	4.6	
Other ADI Total		292.6		43.0
Grand Total		680.1	100.0	100.0

Cumulative Outperformance over AusBond Benchmark - 2007-2020



Cumulative Outperformance over 30 Day BBR Benchmark - 2007-2020

